

the ol' trout

LOUDWATER NEWS

New look and features for the Ol' Trout

Welcome to the new look Ol' Trout! We are excited to have the opportunity to serve the residents of Loudwater by bringing you quarterly updates about what is going on in our local - and very beautiful - area. Thanks must go to Robert Kenison for his sterling work in producing the newsletter over recent years. He has given us a mandate to evolve the format, hence the different look and feel though very much the same heart it has always had.

This issue includes a number of new features which we hope you'll enjoy. We'd encourage you to get involved and let us know if there are particular topics or events you'd like us to cover in future issues. We are eager to help foster the sense of community.

We'd love to hear what you think of the new style newsletter so please feel free to get in touch via editor@lraonline.org.uk. Enjoy!



editor's words

Welcome to the latest issue of The Ol' Trout. With the new look comes a host of new features. Supporting the usual mix of LRA club news, we bring you stories from the local area on **page 6**. Head to **page 5** for a new regular item on local walks. On **page 7** a prize word search focuses on local roads in Loudwater, with a bottle of wine on offer to the winner.

We are also keen to engage with residents and openly invite your own news and stories from Loudwater. Send them to us at editor@lraonline.org.uk.

John and Andrea

"THE COMMITTEE HAS BEEN BUSY IN THE COLD AND WET WINTER MONTHS"

THE CHAIRMAN'S WORDS

Firstly, I'd like to thank John Thompson again for his hard work and persistence in improving our roads. At the beginning of the year, significant improvements were made to the drainage of Loudwater Lane between Sarratt Lane and Chorleywood Road. Some preparatory work was done for the resurfacing of this road which is expected when the weather brightens up in April/May.

You may have noticed from the works going on at the end of Loudwater Drive that there has been some movement with our internet. Openreach are in the process of building the NGA (Next Generation Access) Cabinet 10 which will bring fibre broadband to the houses served by this cabinet. It has been a very slow process and all we know is that it will be at least a couple more months before fibre broadband will be available from it.

I am sad to report that, after 18 years, the Investment Club has voted to wind up in its present form. I think it has been a great club and an asset to Loudwater. If you would like to re-start this club, please get in touch with me. The LRA Committee and the Investment Club's former leadership team will be pleased to provide you with full assistance.

To become more interactive on Facebook, we have created an LRA "Group". This will allow all members to post updates, not just the LRA Committee. This will help residents to share information such as local news and recommendations. We have shut down the original LRA Page so please like the new "Group".



See you over there!

<https://www.facebook.com/groups/LoudwaterResidents>

We have a lot planned for the next few months so please put these dates in your diary:

Caribbean Night - Many thanks to everyone who has already registered for this exciting evening of Caribbean food and a live steel band at Moor Park on Friday 24th March. We have some spaces left so please book your place soon to avoid disappointment. There is a flyer in this copy of the Ol' Trout and you can also download a form or book online on the website.

LRA AGM - if you can, please join us for our AGM. It will be a good opportunity to meet with the LRA Committee and share your ideas with us over a few glasses of wine on Thursday 18th May. The agenda can be downloaded from the website and last year's minutes and financials are available upon request.

Summer Party - Loudwater's event of the year, on Sunday 2nd July, will have a Pirates & Pizza theme! We will have welcome cocktails, design your own gourmet pizza, a giant bouncy pirate ship for the kids and plenty more besides! You can book with the form in this copy of the Ol' Trout and you can also book online.

I look forward to seeing you at these events and as always, if you have any thoughts, comments or suggestions about Loudwater, please do not hesitate to contact me on chairman@lraonline.org.uk.



WINE CLUB

Wine Club celebrates Christmas at Moor Park with 'Totally Elton'

Christmas began for the Wine Club with the advent of their annual Christmas Dinner. Moor Park Golf Club provided the venue and the evening began when we members congregated in the main hall, surrounded by marble cherubs and beautiful paintings.

All the guests were elegantly dressed for the black-tie event and we sipped champagne in anticipation of the evening to come. We were not disappointed. Having chosen our meals, individually, in advance, we were able to join our tables in the Thornhill Room to enjoy the excellent food and accompanying wines.

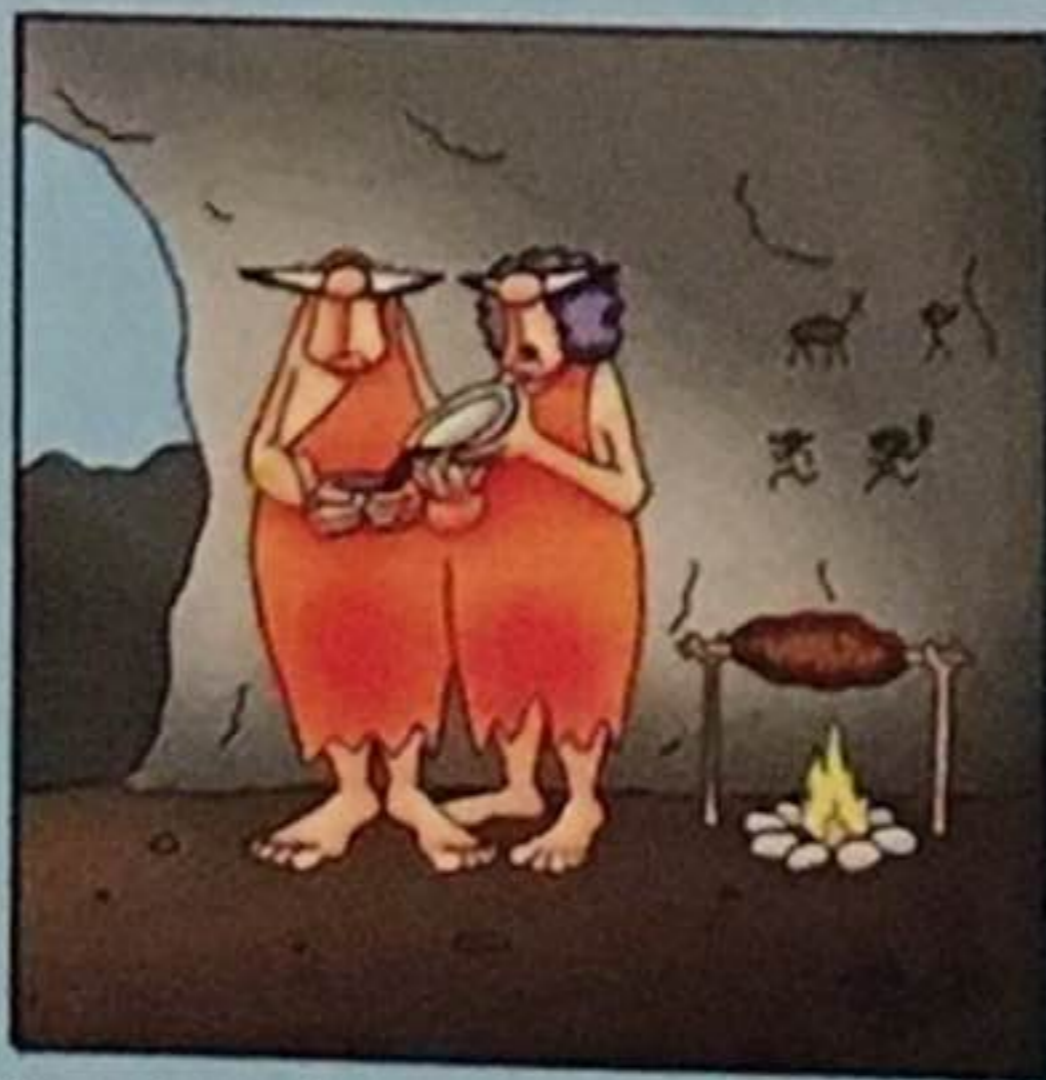
'Totally Elton', the Elton John tribute act booked for the occasion, was ready and waiting for us, playing some of Elton's slower numbers as he accompanied us throughout the meal. In between courses, many guests could be seen singing along to the familiar songs.

This enhanced the ambience, softening any formality, which prepared guests for the next part of the evening. This was when 'Totally Elton' gave us some more up-beat numbers and the dancing began in earnest. One could see why the act was called 'Totally Elton'. It was hard to tell the difference between the Tribute and the real thing, both in looks and sound!

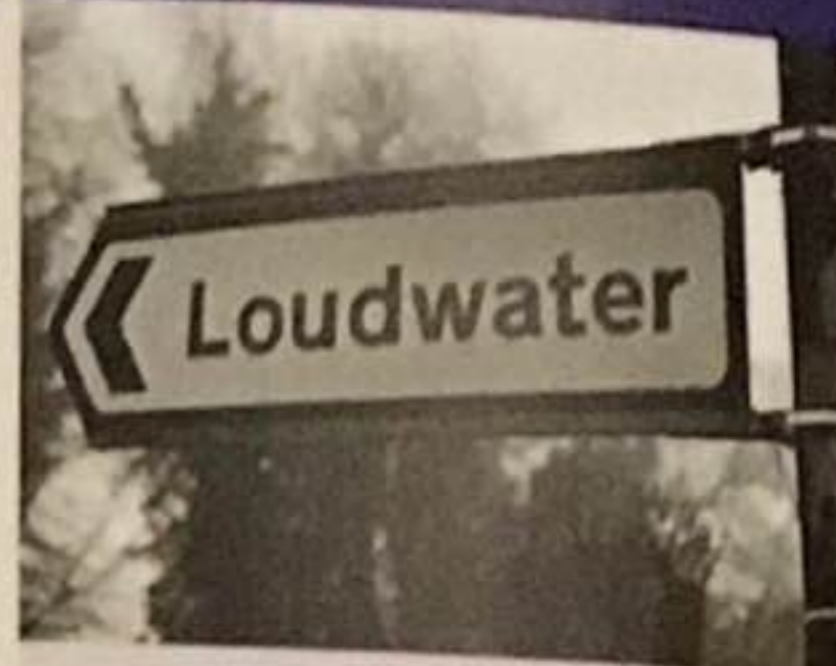
Everyone seemed to thoroughly enjoy themselves, but with excellence in every area, who wouldn't? The evening was a great success and the Wine Club Committee must be congratulated and thanked for organising a superb event.

June Gili-Ross

WINE PAIRING IN THE STONE AGE



"Simple rule of thumb; if it tries to eat us, serve with red. If it runs away from us, serve with white."



LRA contacts

Loudwater Residents Association

Chairman

Alex Buxton

2 Loudwater Ridge

07931697796

E: chairman@lraonline.org.uk

Treasurer

Pat Eckersall

Tree Tops, Cherry Hill

01923 897530

E: treasurer@lraonline.org.uk

Secretary

Anni Sweet

Langleybury, Chess Close

01923 562387

E: secretary@lraonline.org.uk

Planning Secretary

Mike Sindic

La Mimosa, Saratt Lane

01923 371565 / 07880838636

E: planning@lraonline.org.uk

Membership Secretary

Sue Tippen

Dunara, Chess Lane

01923 774016

E: membership@lraonline.org.uk

Events Secretary

June Gili-Ross

Brae Cottage, Trout Rise

01923 562630

E: events@lraonline.org.uk

Diary of Events

Alex Buxton

Editorial

John Cowe

Andrea Marheineke

E: editor@lraonline.org.uk

For LRA queries contact:

E: enquires@lraonline.org.uk

Website:

www.lraonline.org.uk

Facebook:

www.facebook.com/groups/LoudwaterResidents

LoudwaterResidents

Twitter:

https://twitter.com/LoudwaterRA

Editorial Contributions:

Please email stories to:

editor@lraonline.org.uk

Rock Me Amadeus...

The Theatre club recently organised a trip to see Peter Shaffer's iconic play 'Amadeus' at the National Theatre. Pat Eckersall shares her reflections on the performance.

Peter Schaffer sparked my interest in Mozart - I recognised the opening fanfare of 'Eine Kleine Nachtmusik' from an early age - it was played at my primary school assembly. But it wasn't until I saw the 1984 movie version of Schaffer's play that I wanted to find out more about Mozart.

Peter Shaffer is quoted as saying: "Theatre should lead people into **mystery** and **magic**. It should give them a sense of **wonderment** and, while entertaining, reveal a **vision of life**." These themes were very much evident in this production.

Mystery and magic: The play begins in darkness, accusing whispers filling the theatre. The two venticelli (the chorus who inform the audience) - purveyors of fact, rumour and gossip throughout the play - speak as those who like to be first with the news, inviting us in to share in their gossip. Did Salieri murder Mozart? Is he about to confess?

With the lights on the audience, Salieri addresses us as 'ghosts of the future'. He invites us to be his confessors. We are complicit in the fame still enjoyed by Mozart.

Wonderment: This production has a 20-strong orchestra - the Southbank Sinfonia - on stage. When Salieri makes his bargain with God, they bow their heads. When Salieri proudly refers to one of his operas, they mutiny and refuse to play an excerpt. When showcasing Mozart's greatest hits, they underline Salieri's agonised joy on listening to his rival's music.

As for the two lead characters:

• **Salieri** - As a young man, Salieri makes a bargain with God - God will grant him fame as a composer if Salieri lives a virtuous life. But when he hears the voice of God in Mozart's - not his own - music, Salieri reckons that God has not kept his side of the bargain and sets about fighting God by destroying Mozart.



Lucian Msamati - RSC regular (and Salladhor Saan in Game of Thrones) - is a commanding Salieri: grave, restrained but exuding rancorous envy.

• **Mozart** - Mozart's incredible musical abilities do not match his behaviours - he is immature, vulgar, a womaniser and a drinker. How can such magnificent music come from this arrested adolescent? Opinion was divided on Adam Gillen - Liam in the ITV series Benidorm and Gavin in the BBC's Prisoners' Wives - as Mozart. Some felt he overacted. I loved his performance - his whinnying cackle and potty-mouthed petulance reminded me of Tom Hulse in the movie. There were glimpses of sensitivity and his desperate battles to continue exercising his gift were almost too painful to watch in the final sequences.

A vision of life: Finally, are either Salieri or Mozart fulfilled or happy? Is fame a worthy ambition? We are left wondering about the nature of musical genius. To access the truest, deepest soundings must the composer put everything at risk - health, family, security and ultimately life itself?

Next outing: The next Theatre Club trip is to see Love's Labour's Lost at the Theatre Royal Haymarket on 15 March 2017. Coach leaves Loudwater Farm at 11.30am. If you are interested in attending please call **Shehnaaz Kassamali** on **07939 221080** or **01923 770092**.

• Remember the fun we had at 'ABBA night'? don't forget the 'Caribbean Night' on 24th March! It's in our own private suite in the Orangery, Moor Park Golf Club. After great food (starter and main course, with petit fours and coffee to follow) Enjoy the rest of the night by dancing to the live steel band! Great value at £45.00 for LRA members, £48.00 for guests. Apply/send cheques to **Alex Buxton, LRA Chairman: 2 Loudwater Ridge, WD3 4AR**. And make sure you put the 2nd of July in the diary - its summer party time! For more details see the flyer in this issue of Ol' Trout.

• The Loudwater Residents' Association sometimes works alongside the Chorleywood Residents Association (CRA) in planning matters. If you would like more information on the CRA, including how to sign up for their email updates, visit www.chorleywoodresidents.co.uk.

The Annual General Meeting of the Members of Loudwater Residents' Association will take place on Thursday 18th May 2017, 7:30pm at The Barn, Loudwater Farm.

TRDC have agreed that residents may have a third brown bin, on the same financial basis as the current additional bin, ie £70 per annum. If you wish to sign up for 2017-2018, please visit TRDC's website from March onwards to make your request.



Work has begun to fibre Cabinet 10. The cabinet has been stood up along the footpath that runs from the junction of Loudwater Lane and Loudwater Drive. It may take up to two months to be operational, but this is within the timescale that was promised by BT/Openreach.

club news

LOUDWATER GARDEN CLUB

Club enjoys Sussex garden visit and popular Question Time event

On September 14th the Garden Club set off to Sussex for their last garden visit of the year. This time we were visiting two gardens. The first of these, the Sussex Prairie Garden, was a new experience in gardening for most of us.

This 8 acre garden, in a field on a Sussex farm, has been created in a new style of naturalistically planted, large interlocking borders, which have become a living tableau of plants – a vast moving sea of densely planted perennial flowers and tall, waving grasses of every kind between which visitors are welcome to roam freely. We were all thrilled by the colours and the constant graceful movement of the grasses and came away filled with new ideas.

We then went on to lunch at Nymans and to enjoy its vibrant summer borders, still at their peak, and the tranquil woodland. This is a developing garden on an old site and its planting is constantly evolving. The now maturing herbaceous borders in the old walled garden were a blaze of colours with an amazing variety of plants. We all had a most enjoyable day.

On November 30th we held our Gardeners' Question Time event, back at Mont au Source at the kind invitation of Anna Hauser. This is an immensely popular event which was attended by nearly all of our membership and their guests. Our team of gardening experts, good friends to most of us by now, dealt with a wide range of queries and problems from pear rust to pruning mature rhododendrons and, incidentally, informed us that there is now a rhodo type becoming available which will grow on lime! Good news to gardeners round here.

The team were on very good form and their advice was accompanied by a lot of laughter from an appreciative audience. Our problems solved, we enjoyed an excellent buffet and warming gluhwein. A great evening was had by all. **Margaret Jarrett**



INVESTMENT CLUB

End of era for the investment club

After 18 years the Loudwater Investment club is winding up. Having reflected on the current uncertain economic climate in which it's becoming increasingly challenging to beat the FTSE, a recent vote by members has decided to call it a day in the club's existing format. The current leaders are therefore stepping down following years of excellent service to the group which for a long time was very successful, commonly beating the FTSE by a considerable margin. Historically the club met on a monthly basis to review their portfolio with members making recommendations and the group then deciding together what shares should be bought and sold.

Loudwater Residents Association Chairman Alex Buxton has been a member over recent times and is keen that this not be the end for the Investment Club. He has shared that: "If someone is interested in starting up a new club – perhaps in a different format that reflects a market that fluctuates more frequently

- many of the past members would still be interested in being involved. With the economy being rather more volatile these days, meeting more regularly may be worthwhile. So if anyone has ideas for a model that is more flexible and responsive I would really like to hear, and together explore whether this important financial and social club could be reinvigorated.

I'd also like to pass on my thanks to the Investment Club members and in particular the leadership team - Trevor Slade (Chairman), Roy Preedy (Treasurer), Diana Vaughton (Secretary) and last but not least, Tony Bradford (our former Treasurer who kindly carried out the complex valuation calculations of the shares) - for what has been a really successful and enjoyable club. I very much hope that it can rise up again albeit in a different form."

If this is of interest to you, please do contact Alex at chairman@iraonline.org.uk.

LRA Events

March 2017

Wed 15th: Bridge Club
Fri 24th: Caribbean Night
Wed 29th: Wine Club trip to Denbies Vineyard

April 2017

Wed 5th: Bridge Club
Wed 19th: Bridge Club
Wed 26th: Garden Club visit to Pashley Manor Garden
Fri 28th: Wine Club 'Call my Bluff' Quiz
Sun 30th: LRA Chairman's Lunch

May 2017

Wed 3rd: Bridge Club
Mon 8th: Golf Club Annual Golf Day
Mon 9th - Fri 12th: Wine Club holiday to Portugal
Thur 18th: LRA AGM
Wed 17th: Bridge Club
Wed 24th: Garden Club Afternoon Private Visit to Seerge Hill Garden

June 2017

Wed 7th: Bridge Club
Wed 21st: Bridge Club
Sun 25th: Wine Club Summer Lunch
Wed 28th: Garden Club Visit to Hilliers Garden

July 2017

Sun 2nd: LRA Pirates and Pizza Garden Party
Wed 5th: Bridge Club
Wed 19th: Bridge Club
Tue 25th: Garden Club Open Garden Visit to Roger Trigg's Garden

Club Contacts

BRIDGE: Janis Rees,
Tel: 01923 710095,
E: janisrees@btopenword.com

GARDENING: Margaret Jarrett
Tel: 01923 774225
E: mum.jarrett@talktalk.net

GOLF: Percy McCloskey
Tel: 01923 710692
E: percy@jamesestateagents.com

THEATRE: Shehnaaz Kassamali
Tel: 01923 770092
E: shehnaaz@vanitarayinteriors.co.uk

WINE: Carole Timms
Tel: 01923 776681
E: carolecoin@yahoo.co.uk

the countryside

A walk on the wild side

DISTANCE: 2.5 MILES (5 MILES ROUND-TRIP)

TIME: 1 HOUR TO 1.5 HOURS

We are blessed with some glorious countryside on our doorsteps. For any nature-loving Loudwater resident just a few steps from our front doors and we enter the realm of sprawling countryside that offers some of the most spectacular views in Hertfordshire. What better way to appreciate our local environment than to lace up the hiking boots and head out into the wilderness.



Over the years, long-standing residents have put together a collection of their own favourite routes and can be seen heading off into the woods or along the lanes. But where are they going? A common question asked by newer settlers, often too embarrassed to ask in case they come across as simply Loudwater tourists! Fear not, help is at hand as we offer readers a good starting point for a relaxing Sunday stroll. Not too taxing, our 5-mile round trip takes us through some wonderful fields and woods and even allows time for a spot of Sunday lunch in a country pub en route.

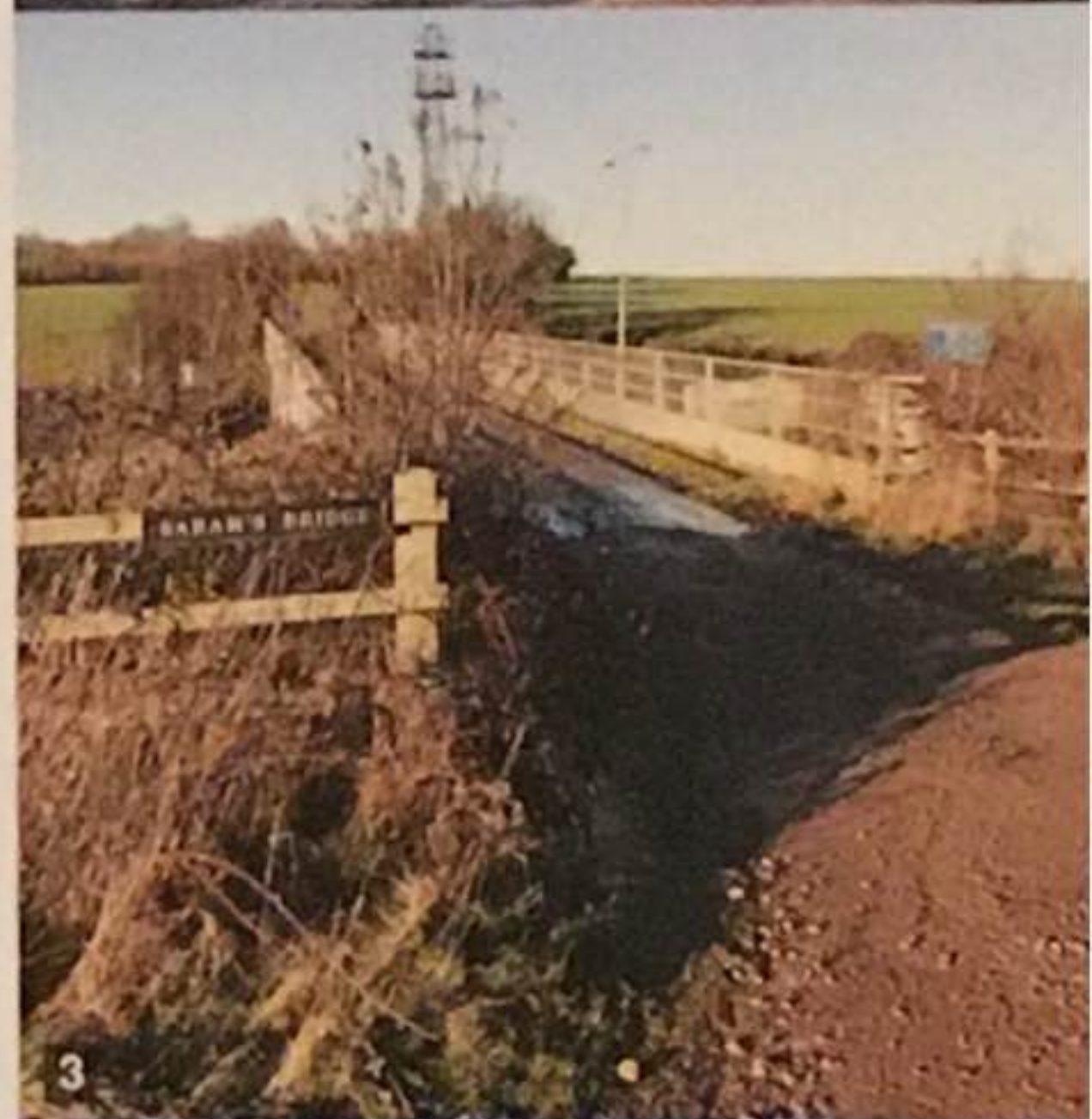
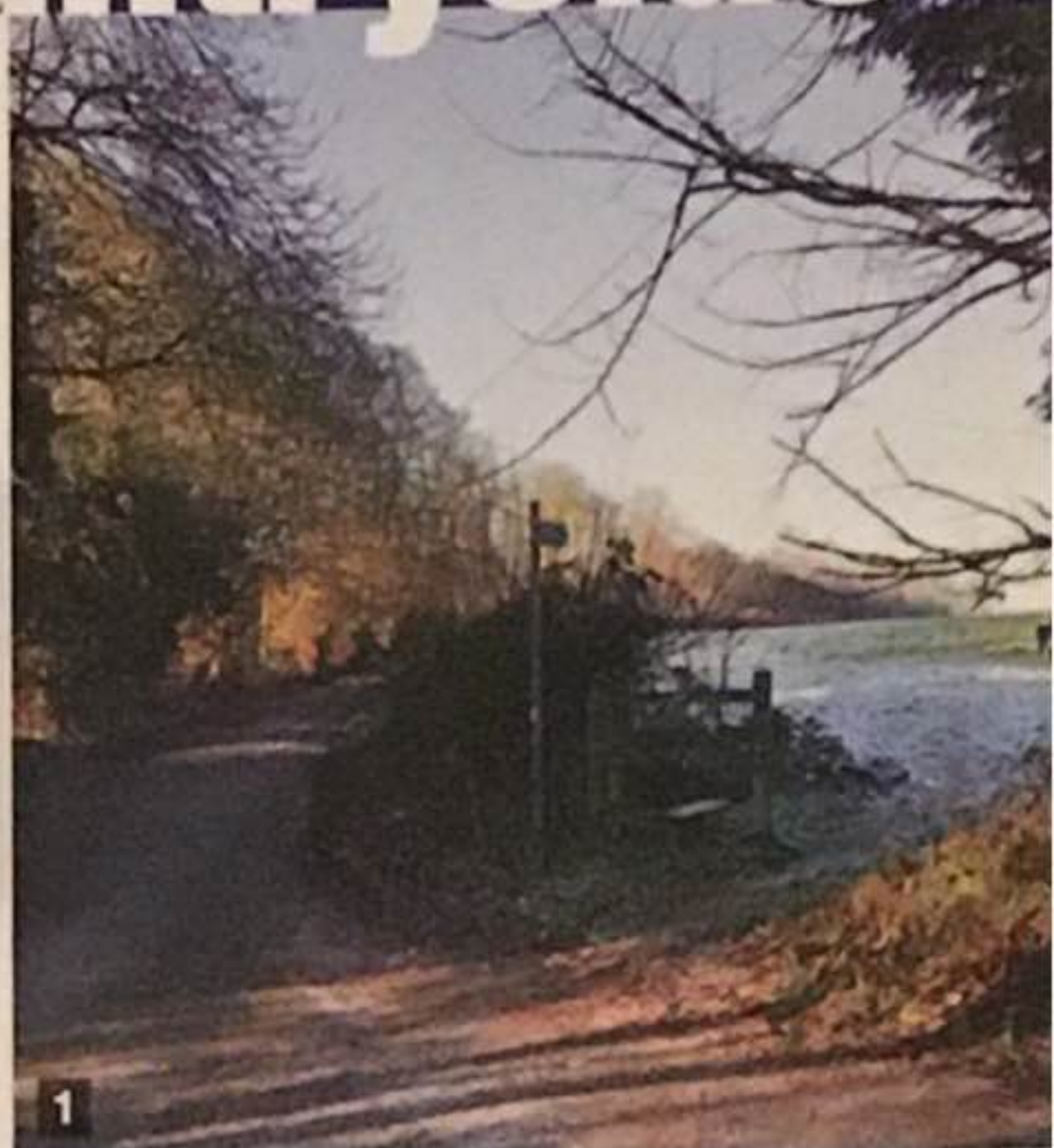


On a bright and frosty Sunday, the walk starts by making one's way through the Loudwater Estate heading along Troutstream Way, turning left at the junction with Trout Rise and then a quick right onto Cherry Hill heading up the steep pathway joining back on to Trout Rise. Turn right and follow Trout Rise until you reach Sarratt Lane. As we all know it's time to have your wits about you as you head left along the lane watching out for inconsiderate motorists. Passing Loudwater Heights and Ladywood Close on the left, as you approach Cherry Walk on the right you will notice a stile and sign for the 'Public Footpath Sarratt Church 1' (1). It's here the real beauty of our local area comes into play. Head across

the field in a diagonal direction. At the far side of the field, again climb over the stile and cross Solesbridge Lane heading towards a gated field with the stone-faced terrace of 'Flint Cottages' on your right (2).

Walk around the gate and with the field on your left, follow the path until you reach 'Sarah's Bridge' (3). Passing on the bridge over the M25, following the 'Public Footpath Churchend 1/2' sign, proceed straight ahead on the path until you reach a wooded area. Looking back from where you have walked it is amazing to think that one of Europe's busiest roads is only a stone's throw away. We often take for granted the science and technology involved in modern road construction to help maintain our peaceful countryside. From here, follow the footpath sign through the wood and into a spectacular open field (4) with a view towards Sarratt and New Model Farm on your right-hand side. Carry straight on over the fields, through the opening in the hedge and walk up towards Sarratt. You will reach a stile that takes you into New Road. Turn right and after a few metres you will reach a very welcoming sight - The Cock Inn (5). The perfect place for a Sunday roast or a thirst-quenching pint! After refuelling you can head back on the same route, although if you're feeling adventurous, there are a few other options that take you out towards Chorleywood and Chenies. We'll be bringing you those in further issues of the OI' Trout.

If you would like to share any local walks with other residents, please feel free to send details in and we will happily feature them.



Cream of the crop?

Local resident Lisa Marheineke kindly offered to review the latest 'foodie' addition to the neighbourhood with her family. Here she tells us about their visit...

Delighted, excited and overwhelmed with choice were my three little boys when we visited the newly opened ice cream parlour 'Creams Cafe' on Rickmansworth High Street recently. We were greeted with a vast, multi-coloured array of frozen delights as we entered the venue and given an American diner style booth to sit in.

Creams is a franchise that was originally started in 2008 in West London and has subsequently expanded with multiple outlets around the UK. According to their website they "aim to present a 1950's retro Americana genre whilst boasting a black and purple colour scheme alongside with distinctive lighting which adds a trendy, unique looking design and feel."

We were certainly intrigued to give it a try and after a lengthy deliberation we selected sprinkle covered cones with flavours including mint choc

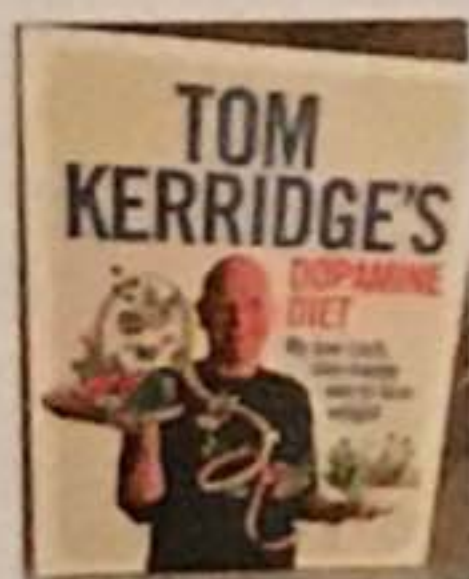


chip, cookies & cream, raspberry ripple and salted caramel, amongst others - and an exotic sounding 'Choc fudge hot and cold volcano', as well as a Nutella crepe. We were all pleased with our selections although my Nutella pancake randomly came with banana, which I didn't ask for or indeed like. They were however quick to rectify this and replaced it with a delicious and large freshly cooked pancake.

Although it was not a particularly cheap visit - totalling £24 for five of us without drinks - it was pleasurable and felt like a naughty, indulgent treat! We will certainly be returning perhaps for a birthday or special occasion. To find out more you can visit their website at www.creamscafe.com



An evening with celebrity chef Tom Kerridge at Clement Danes



Chiltern Bookshops recently hosted an evening with Tom Kerridge at Clement Danes. Known for his Michelin starred Marlow pubs - The Hand and Flowers, and The Coach - over the last four years he has evolved the way he eats in order to shed more than 11 stone and adopt a healthier lifestyle.

The purpose of this event was to promote his new recipe book 'Tom Kerridge's Dopamine diet', billed as his low-carb, stay-happy way to lose weight. It was an opportunity to hear from him not only about his top tips for adopting a way of eating that fills you up, is high on flavour and intentionally focuses on triggering happy hormones - but also about how he became a chef, why he is now so passionate about it, and other exciting projects and plans he has in the pipeline.

In terms of projects, Tom is opening a third restaurant in September in Knightsbridge; he's established his own television production company (though he hates watching himself on TV!) and to mark the 10th anniversary of The Hand and Flowers he's hosting a festival described as "a laid-back celebration of the very best food, drink and music" called 'Pub in the Park' which is taking place in Marlow 19-21 May (see mymarlow.co.uk for details).

Clearly very busy, both professionally and personally, he also spoke of enjoying his relatively new role as dad to his 14 month old son. He came across as a great guy and was blown away by the number of people who had turned up. I for one will be taking on board his advice. Well most of it. Giving up alcohol altogether may be a bit of a stretch (!) but his book is definitely worth checking out. Find out about Chiltern Bookshops events programme at: <http://chilternbookshops.co.uk/events>

Strictly Come Dancing is alive and well in Chorleywood



Strictly is alive and well (possibly with a few less sequins) on Monday evenings in Chorleywood. Whether beginners or a little more experienced, eager and light footed locals are learning - or

perfecting - their ballroom and Latin American dance moves at classes held at The Bridge (St Andrews Church), 37 Quickley Lane. This particular week the Rhumba was the focus of attention and deep concentration mingled with a fair few giggles was delivering a fun evening. Sue Evison of Chess House said: "My husband John and I have been coming along for a couple of years and really enjoy it! It's a great way to meet people and get a bit of exercise. And the timing (7.30 to 8.30pm for the beginners class) works well for us."

Courses run on a termly basis, starting with a taster evening where those interested in giving the class a whirl - quite literally - can try a session out free of charge. The course then runs for a further nine Monday evenings, concluding with a party night on the final week where the beginner and intermediate classes join together. The cost is £35 per person for a term. Beginners are extremely welcome and you don't have to be in a couple. As Sue said - the beginner class runs from 7.30-8.30pm, with the intermediate class taking place from 8.30-9.30pm. The dance instructors are professionals and make each evening very entertaining.

If you're interested in finding out more about Cha Cha Chorleywood Ballroom and Latin American dancing classes please feel free to contact Sylvia at sylviamarheineke@gmail.com. Maybe you could work up to getting a 'ten from Len (or Darcy)!'

prize word search

Loudwater Roads

L O U D W A T E R D R I V E D
E S E G D I R E B M I T X R K
G I I H B R I D L E L A N E H
D Z E N A L R E T A W D U O L
I H B C N Y L L I H S K O O R
R F M R J G W S E R B W S G K
R C H E S S L A N E M C D M M
E V T K W T O F R Z Q P W W P
T N I O P L L I H D Q S O O T
A U Y O Q O K M F F C D Z W R
W C J T Q S U E F V W O U V E
D L B W L F N Q Y W H N P O E
U J Z Q Q W A G O N W A Y S X
O A R M I T A G E C L O S E E
L U L N L L I H S S E H C T A

LOUDWATERLANE
 CHESSLANE
 TIMBERIDGE
 HAYWARD COPSE

HILLPOINT
 CHESSHILL
 BRIDLELANE
 WAGONWAY

LOUDWATERDRIVE
 ROOKSHILL
 ARMITAGE CLOSE
 LOUDWATERRIDGE



Founded in 1949 as a grocer, F. L. Dickins is a family business and for over sixty years has offered a variety of services. Today F. L. Dickins is still a family run business with a passion for wine, making your experience unique. F.L. Dickins offers a great selection of wines - old and new world, and much more!



wine of the month

The Landings Shiraz-Cabernet Sauvignon South Eastern Australia

- The combination of the Shiraz grape blended with the Cabernet Sauvignon varietal gives this wine blackcurrant and plum fruit flavours together with a tantalising hint of spice and soft yet integrated tannins.



ENTER TO WIN A BOTTLE OF WINE

The OI Trout has teamed up with local wine merchant F.L. Dickins to bring readers a new prize word search. With a local theme, the first crossword centres around roads in Loudwater. To ease readers in, we have made things simple and selected twelve roads for you to find. Simply find the words and then send your entries in to enter in the draw for a bottle of the wine of the month.

Fill in your details and either scan the page or take a picture and email your entry to editor@iraonline.org.uk. Alternatively, why not drop your entry in to F.L. Dickins at 89-91 High Street, Rickmansworth, and while you're there have a look at the wide selection of wines.

Winners will be notified one month after publication of the newsletter and details will also be published in the June 2017 issue of OI Trout. Good luck and we look forward to receiving your completed word search. Deadline for entry: 20th April 2017

NAME:

ADDRESS:

TELEPHONE:

EMAIL:

planning update

APPLICATIONS

Discharge of Conditions 4 (Tree Protection Measures) and 5 (Landscaping) pursuant to planning application 16/1956/FUL.
The Old Stables Bridle Lane Loudwater Rickmansworth Hertfordshire WD3 4JB

Ref. No: 16/2515/DIS | Received: Thu 01 Dec 2016 | Validated: Thu 01 Dec 2016 | Status: Pending Consideration

Part Retrospective: Part two storey and part first floor rear extension.

The Old Farmstead Farm Lane Loudwater WD3 4JX

Ref. No: 16/2401/RSP | Received: Thu 17 Nov 2016 | Validated: Wed 30 Nov 2016 | Status: Pending Consideration

Temporary siting of a mobile home for three years to be used as residential accommodation for one employee of livery stables during conversion of barn.

Trout Rise Farm Troutstream Way Loudwater Rickmansworth Hertfordshire WD3 4LB

Ref. No: 16/2553/FUL | Received: Tue 06 Dec 2016 | Validated: Fri 16 Dec 2016 | Status: Pending Consideration

Discharge of Condition 6 (Bat Survey) pursuant to planning application 15/0771/FUL.

Sleepy Hollow Whisper Wood Loudwater Rickmansworth Hertfordshire WD3 4JU

Ref. No: 16/2771/DIS | Received: Thu 22 Dec 2016 | Validated: Thu 22 Dec 2016 | Status: Pending Consideration

Single storey rear extension.

Ashleigh Lodge Drive Loudwater WD3 4PT

Ref. No: 16/2707/FUL | Received: Wed 21 Dec 2016 | Validated: Wed 04 Jan 2017 | Status: Pending Consideration

First floor side extension.

Brae Cottage Trout Rise Loudwater WD3 4JY

Ref. No: 17/0240/FUL | Received: Tue 07 Feb 2017 | Validated: Tue 07 Feb 2017 | Status: Pending Consideration

Replacement windows and new rendering to external walls.

Wychwood Troutstream Way Loudwater Rickmansworth Hertfordshire WD3 4LB

Ref. No: 17/0151/FUL | Received: Wed 25 Jan 2017 | Validated: Fri 10 Feb 2017 | Status: Pending Consideration

DECISIONS

Replacement windows and doors to black aluminum framed double glazing.

Miraflores Troutstream Way Loudwater WD3 4LA

Ref. No: 16/2032/FUL | Received: Wed 28 Sep 2016 | Validated: Tue 04 Oct 2016 | Status: Decided - Approved

Discharge of Conditions 5 (Tree Protection Measures) and 6 (Approved Method Statement) pursuant to planning permission 16/0970/FUL.

Rookery Wood House Loudwater Lane Loudwater WD3 4HP

Ref. No: 16/2116/DIS | Received: Tue 11 Oct 2016 | Validated: Wed

12 Oct 2016 | Status: Discharged

Single storey rear extension, alterations to existing rear dormers to include Juliet balconies and alterations to fenestration.
Tavel Bridle Lane Loudwater WD3 4JQ

Ref. No: 16/2012/FUL | Received: Fri 23 Sep 2016 | Validated: Tue 11 Oct 2016 | Status: Decided - Approved

Single storey front and side extension.

Chesters Trout Rise Loudwater WD3 4JY

Ref. No: 16/2268/FUL | Received: Mon 31 Oct 2016 | Validated: Mon 31 Oct 2016 | Status: Decided - Approved

New entrance gates.

Coppers Sarratt Lane Loudwater WD3 4AD

Ref. No: 16/2273/FUL | Received: Mon 31 Oct 2016 | Validated: Mon 07 Nov 2016 | Status: Decided - Approved

Temporary siting of a mobile home for three years to be used as residential accommodation for one employee of livery stables during conversion of barn.

Trout Rise Farm Troutstream Way Loudwater Rickmansworth Hertfordshire WD3 4LB

Ref. No: 16/2553/FUL | Received: Tue 06 Dec 2016 | Validated: Fri 16 Dec 2016 | Status: Withdrawn

Discharge of Conditions 4 (Tree Protection Measures) and 5 (Landscaping) pursuant to planning application 16/1956/FUL.
The Old Stables Bridle Lane Loudwater Rickmansworth Hertfordshire WD3 4JB

Ref. No: 16/2515/DIS | Received: Thu 01 Dec 2016 | Validated: Thu 01 Dec 2016 | Status: Discharged

Part Retrospective: Part two storey and part first floor rear extension.

The Old Farmstead Farm Lane Loudwater WD3 4JX

Ref. No: 16/2401/RSP | Received: Thu 17 Nov 2016 | Validated: Wed 30 Nov 2016 | Status: Approved



Are you thinking of selling or letting your property?

Gibbs Gillespie is a dynamic multi-office team offering a more personal and dedicated approach to clients. We achieve excellent results and would be delighted to do the same for you.

Please contact us on 01923 771 771 to arrange a complimentary market appraisal.

We look forward to meeting you.

Gibbs Gillespie is proud to sponsor the printing of The Ol' Trout.

3 Odeon Parade, High Street, Rickmansworth WD3 1EE

gibbs-gillespie.co.uk