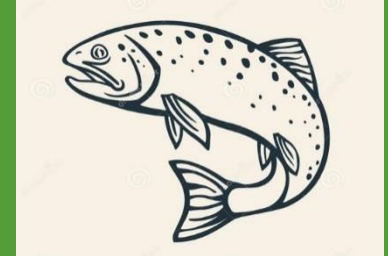




The Ol' Trout

Loudwater Residents' Association newsletter



WORDS FROM THE EDITOR

DECEMBER 2020

Emerging from lockdown 2

Welcome to the winter 2020 issue as we draw to the close of a year none of us will forget. At the time of writing, we are midway through our second lockdown and very much hoping that current restrictions will enable us to have some sort of near normal Christmas. I trust that when you come to read this, the situation is more positive.

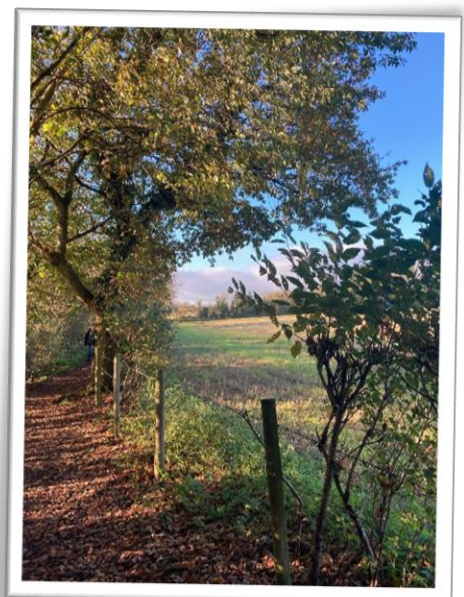
Over recent weeks in Loudwater, we've had some beautiful autumnal days – this edition of the Ol' Trout is peppered with photographic evidence from a few contributors who've enjoyed getting out walking again. While the days are getting shorter and evenings darker, many of us are looking forward to getting the festive decorations out a little earlier than usual this December. Indeed, the appearance of the much-enjoyed Christmas tree on Troutstream Way was already being eagerly anticipated by estate residents in mid-November. Every year Lady Jarvis very kindly adds some festive cheer to the neighbourhood by putting a beautifully lit tree up outside her home. This has become a well-loved tradition

that many folk have said they look forward to each year, and they've asked me to express their thanks and appreciation to her.

Our LRA clubs continue to press pause on their regular activities, so sadly we don't have any events from them to report on this time, however we are able to feedback on the Zoom based AGM and our 'take-away' MacMillan Coffee Morning, which both took place in September. We hear from Robert Voss who hosted the Duchess of Cornwall on her recent visit to Mill End Community Centre. We meet Sarah Wenzel and hear how her family's hugely successful bakery business has fared throughout 2020. We find out a little about LRA Treasurer, Rohit Desai, who joined the committee in December last year. And LRA Environment Secretary John Thompson, and Kerry Rock, bring us an update on the health of the River Chess in light of reports of raw sewage discharge from Chesham Sewage Water Works and the HS2 work that is underway. And as usual, we conclude with our local planning update.

We had hoped to be able to, once again, host a community get together for some carol singing, mulled wine and mince pies this month, but under the circumstances will save that for 2021. In the meantime, as we head towards a somewhat different festive season to what we've known before, the LRA would like to wish all Loudwater residents a safe and happy Christmas, and a healthy 2021.

Andrea Marheineke, Editor



LRA Annual General Meeting

On **Thursday 17 September at 7.30pm** the first ever Zoom LRA AGM took place. After a few minor technology challenges, the proceedings got underway with each committee member and club leader sharing their report for the last 12+ months. It was encouraging to hear that prior to Covid a great deal had been going on, with many residents enjoying opportunities to socialise over shared interests and at community events.

Alex Buxton confirmed that he was stepping down as Chairman and therefore this would be his last AGM. He thanked all the committee members that he'd worked with since 2015, past and present. Les Gili-Ross asked for it to be noted how grateful everyone was for Alex's service as Chairman, and what a great job he has done. Anni Sweet advised that the committee had a small thank you gift for him – which ordinarily would have been presented at the AGM, but would be delivered to his home shortly!

And while virtual tokens of appreciation were being handed out, the Ol' Trout distributors were also acknowledged for their faithful service in delivering each edition. Typically, the Chairman hosts a lunch each year to thank all who contribute to neighbourhood life. As this was not to be in 2020, bottles of wine would be delivered to them. We also took a moment to remember Mike Sindic and his huge contribution to the LRA.

So, it was an AGM with a difference but fun nonetheless. Thank you to all LRA members who joined us.



Meet LRA Treasurer Rohit

Last year Pat Eckersall stepped down from her role as LRA Treasurer as she and husband Mike were moving away. The committee were therefore extremely grateful when fellow resident, Rohit Desai, offered to fill the vacancy. It's been a year now since he took on the role (he's doing a great job!), so we thought it was about time we introduced him to our members so you can know a little bit about him.

Andrea sent him a few questions, here's what he had to say:

1. Where do you live in Loudwater and what do you like about it?

I live in a flat in Loudwater House. It's a 200 year-old period building with an interesting history.

2. How long have you lived in Loudwater and where did you live before?

I have lived here for almost ten years and was previously in Stanmore.

3. How did you come to take on the role of LRA Treasurer?

When Pat resigned, I was asked to take on her role by a mutual friend. Since I broadly approve of what the LRA seeks to achieve, I agreed to take on the position of Treasurer.

4. What is your day job?

I'm a Chartered Accountant and had been a Finance Director for some 20 odd years, however 14 years ago I decided to give up paid roles and instead spend most of my time in unpaid positions for non-profit organisations whose objectives I agree with.

5. How do you spend your free time?

My interests are quite varied, they range from politics, history and economics to travel, music, sports and bridge.

Thanks Rohit – LRA finances are clearly in good hands! It's great to have you on the team.

MacMillan Coffee Morning take-away style

The MacMillan Coffee Morning is the cancer research charity's biggest fundraising initiative each year. Sadly, many coffee morning's that were planned had to be cancelled but we really wanted to see if there was something we could do, within the restrictions, to raise money for them. Our Events Secretary Zoe Wright-Browne came up with the idea of a take-away coffee morning and it proved extremely successful, raising over £600.

Plans were made to ensure social distancing could be observed, with tables set out at the top of Zoe's driveway on Trout Rise, and paper plates and takeaway cups used. The Wenzel family once again supported us with a great selection of treats from their bakery and Ellie and Holly Wenzel, along with Roddie Wright-Browne were instrumental in helping to organise and serve.

We were overwhelmed by the number of people who stopped by over the course of the morning, and everyone was extremely generous. Tea, coffee and homemade lemonade washed down danish pastries, homemade cakes, cookies, gingerbread men and sausage rolls. Thanks to everyone who supported this event, especially Zoe, Sarah Wenzel and Sonny who also collected donations and sold treats at the entrance to Troutstream Estate.



Ayla enjoying her cupcake



Skeleton Roddie

Halloween in Loudwater

Unsurprisingly, it was a rather different Halloween this year. In both 2018 and 2019 many of us walked in groups, knocking on doors and admiring the pumpkins and ghoulish decorations, but obviously that wasn't possible this time.

Nonetheless, many residents entered into the 'spirit' (see what we did there?!) of the occasion and left stashes of sweets out for the children. Thank you to everyone who helped to make it special for those who did venture out with their family.



Move faster.

Sell or Let with

**GIBBS
GILLESPIE**

Call us today for your
free up-to-date valuation.

SALES: **01923 771771**

LETTINGS: **01923 773773**

gibbs-gillespie.co.uk

The Duchess of Cornwall visits



Back in October, Loudwater resident Robert Voss, Lord-Lieutenant of Hertfordshire, hosted The Duchess of Cornwall for her visit to **Mill End Community Centre**, in her role as patron of the Royal Voluntary Service (RVS). The RVS is one of the largest volunteering organisations in Great Britain, and the team at Mill End lunch club provide meals and company for elderly people in the area.

The purpose of her visit was to raise the profile of the wonderful work done by RVS volunteers and she took time to thank those present for their dedication and hard work.

Far from standing on ceremony, The Duchess got very much involved. She helped out serving meals, chatting to guests and even decorated trifles – though she was very self-deprecating about her culinary abilities!

Robert commented:

“On October 8th I had the great honour and pleasure of receiving HRH The Duchess of Cornwall on her recent visit to the RVS lunch club at the Mill End Community Centre. The Duchess was as ever cheerful and engaging - rolling up her sleeves and donning an apron to serve lunch to a number of local members.

Only two weeks earlier I had presented Mill End Community Centre with the Queens Award for Voluntary Service - known as the MBE for volunteers. My team of Deputy Lieutenants had spent considerable time assessing their nomination which I am absolutely delighted was successful - one of only 220 awarded in the UK by Her Majesty The Queen in 2020.

Both events were landmark occasions for Rickmansworth.”

In every corner of Britain, the **Royal Voluntary Service** mobilises volunteers to support those in need, in hospital and in the community. Through the gift of voluntary service, volunteers provide much-needed support for over-stretched public services and for people as they age. Their volunteers work at scale in the NHS, freeing up NHS staff to dedicate more time to patient care, and within communities to give practical help and support to people as they age.

royalvoluntaryservice.org.uk

Coinciding with Volunteers' Week (1-7 June 2020), this year's **Queen's Award for Voluntary Service** celebrates the work of a fantastic, diverse range of volunteer groups whose work has enhanced and supported local communities over a number of years.

The Queen's Award offers a chance to highlight their outstanding contribution to society and also to recognise the crucial role many have played to support vulnerable people during the coronavirus pandemic.

Find out more at www.gov.uk



A chat with Sarah Wenzel



The Wenzel family have consistently been generous supporters of LRA events over recent years – our MacMillan Coffee Morning's being prime examples of their kindness in action as each year they provide us with substantial supplies of delicious baked goods. Their bakeries are becoming a familiar sight in high streets around the North West of London area. Given the challenges 2020 has thrown at retailers, we wanted to check in with them to see how their business is faring through these difficult times, and to find out a bit more about them. So, we put a few questions to Sarah Wenzel, and she shared with us...

"I live on Sarratt Lane and have lived there for just over three years.

Wenzel's was founded by my father in 1975. He was born into a family of bakers and left school at 15 to work in the trade. He worked his way up through management and set out to start his own business. After borrowing £6,000 from the bank, he opened his

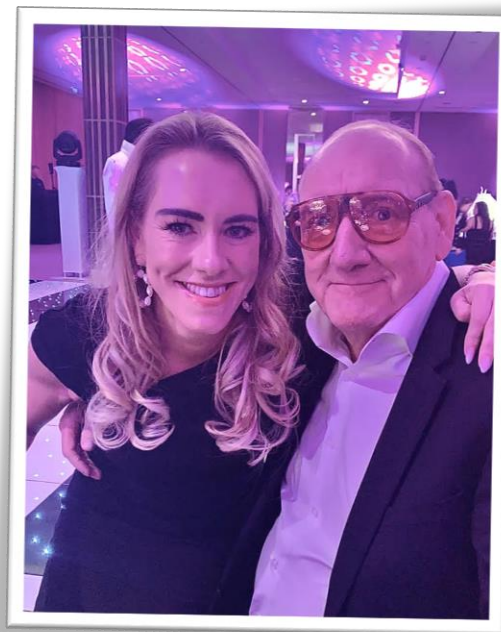
first shop in Sudbury Hill. I joined the business 15 years ago and, together with our management team and fantastic staff, Wenzel's continues to grow.

2020 has been challenging for the business. We endeavoured to keep the business going through both lockdowns to ensure that our loyal customers could rely on us for their daily bread and treats. One of our main aims was to ensure that our staff and customers were safe, so we invested a great deal of time and money in safe working practices as well as PPE.

Our staff have been amazing and as a result we gave them all a bonus in July to thank them for their commitment and hard work.

Wenzel's loves to support the local community as well as various charities. We donate a lot of our food waste to food banks, and also donate to various good causes throughout the year.

We also like to invest in the future generation and do this by sponsoring local football and rugby teams, and also offering free school visits to our factory where the children learn about bread production. It's a very interactive trip and the children get to make bread and decorate gingerbread men and cupcakes.



Sarah and her father Peter

The future for Wenzel's is very exciting. We are currently opening 2 shops a month which is creating employment and also assisting our suppliers (some who have found this year very hard). We are bucking the trend with retail and will seek to ensure that this continues by being innovative and looking after our customers.

I love living in Loudwater. It's close to both my daughters' school and our head office in Watford.

I enjoy the beautiful walks that are on our doorstep, and also the lovely people I have met since I became part of the Loudwater community."

It's encouraging to have such a success story within our community, especially one with such a big heart. Thank you to the Wenzel's for your friendship and support, we wish you continued success for the future.

You can find out more about Wenzel's bakeries at their website:

wenzels.co.uk



Autumnal walks

2020 has inspired us to get out walking, a pastime that for many, our previous often busy lives rarely afforded. Discovering and enjoying the local countryside has been a bit of a silver lining in this otherwise strange year.

So, in the absence of LRA club activity to report on, we thought we'd share a couple of pictures (below) that Anni Sweet, LRA Secretary, captured as she walked along part of the Hillingdon Way and then back along the canal to Rickmansworth aquadrome. And a few of the fields between Loudwater and Croxley Green (right) – a path I've trod many times this year!

If you have any such photos of routes you've found particularly pleasurable, do share them with us by emailing them to editor@lraonline.org.uk with a few details and we may publish them in a future issue.

In the meantime – happy walking!



LRA CONTACTS

Secretary - Anni Sweet
secretary@lraonline.org.uk
Phone: 01923 562387

Treasurer - Rohit Desai
treasurer@lraonline.org.uk
Phone: 07809 628684

Membership - Roger Trigg
membership@lraonline.org.uk
Phone: 01923 774293

Environment - John Thompson
environment@lraonline.org.uk
Phone: 01923 772125

Events - Zoe Wright-Browne
events@lraonline.org.uk
Mobile: 07974 400335

Ol' Trout - Andrea Marheineke
editor@lraonline.org.uk
Mobile: 07710 145925

For LRA enquiries contact
enquiries@lraonline.org.uk

Website www.lraonline.org.uk

Facebook
www.facebook.com/groups/LoudwaterResidents

Twitter
<https://twitter.com/LoudwaterRA>

Being considerate neighbours

Residents have been in touch to highlight concerns regarding:

Bonfires - there are a considerable number of thatched roofed homes around Loudwater and sparks from garden fires can pose danger for these properties.

Dumping leaves - Loudwater Lane is prone to regular and severe flooding. The discarding of piles of leaves here aggravates this problem, washing across the road in heavy rain and preventing access to Loudwater Drive.

Please be considerate to residents.

River Chess update

We're very fortunate to have the clear waters of the River Chess meandering through Loudwater and with the lovely walks along its banks it also supports a wide variety of wildlife from Brown Trout, Ducks, Heron, Kingfishers and Water Vole to name a few. Unlike a traditional river the River Chess is a chalk stream and one of only a few surviving in the UK. Most of its water comes from a large chalk aquifer in the Chilterns which is why the water is so clear. Unfortunately, a number of chalk streams have dried up as they face material challenges that many people may not be aware of and the River Chess is certainly experiencing many of these challenges today.

Water companies have traditionally extracted water (abstraction) from these chalk aquifers for normal use which can over time leave too little for these rivers such that they eventually dry out, the HS2 London to Birmingham rail link is tunneling directly through the aquifer and the effects of that are still unclear, and the sewage treatment works in Chesham have periodically been overwhelmed and released significant quantities of raw sewage into the River Chess.

Kerry Rock, a Loudwater resident who is part of a group that has spent many years campaigning to protect the health of the river provides more specific information on how the river has been affected and the initiatives that are being taken to mitigate any damage:

"Most critically, 2020 has brought very high levels of sewage discharge from the Chesham Sewage Treatment Works (STW) straight into the River. Between January and October this year, there has been raw sewage discharged to the river on 69 days, this includes every day from 28 February to 17 April. At a



public meeting in Sarratt in September, Thames Water announced that they will be increasing capacity at the Chesham Sewage Treatment Works by 30% over the next two years. This will hopefully reduce storm water sewage discharges. They've also started investigating groundwater ingress into the sewerage network, the reason for the months long un-permitted sewage discharges of 2014 and 2020.

Another ongoing threat to the Chess is work being undertaken as part of HS2. The Chiltern chalk aquifer is at risk from the tunneling and drilling activity associated with the project. On top of that, the tunneling itself is likely to require extensive water supply, and there are concerns that the aquifer may be seen as a suitable source, further threatening water flow in the river.

While the sewage discharges and HS2 are ongoing problems, there has been some good news on the abstraction side. On 27 September, in association with World Rivers Day, Affinity Water announced that they've ended abstraction from their two bore holes at the Chesham and Chartridge pumping stations. These two bore holes descended deep into the chalk aquifer which holds the vital spring water on which the River Chess relies for its flow. Hopefully, this will lead to a gradual restoration of the aquifer

which will mean a rise in groundwater levels and more water for the Chess and its globally rare habitat.

The River Chess Association was formed just over 10 years ago to draw attention to the significance of the Chess and, amongst key objectives, to lobby for the reduction of abstraction to restore flows and for the pollution of the river from untreated sewage releases to cease. As so many of us take time to enjoy the beauty of the river, it's good to know that the water companies are starting to listen to local stakeholders and understand more about the needs of the Chess and this precious riverine environment."

There are many associations and individuals helping to protect these rare commodities including Feargal Sharkey, probably best known for fronting The Undertones, and he has been campaigning against pollution in British rivers for many years, but with a particular focus on chalk streams. Whilst we may take it for granted that the River Chess and all that it brings will be there forever we should all be grateful to those tirelessly working in the background to try and ensure this remains the case.

John Thompson, LRA Environment Secretary, and Kerry Rock

Planning update

August to November 2020

Beechen Hill House, Sarratt Lane,
Loudwater WD3 6AA
Discharge of Condition 2 (External Materials) pursuant to planning permission 20/0628/FUL

Ref. No: 20/1605/DIS | Received: Thu 06 Aug 2020 | Validated: Thu 06 Aug 2020 | Status: Decided

Tall Timbers, Rooks Hill, Loudwater WD3 4HZ

Discharge of Condition 3 (AIA and Method Statement) pursuant to planning permission 19/2442/FUL

Ref. No: 20/1589/DIS | Received: Wed 05 Aug 2020 | Validated: Wed 05 Aug 2020 | Status: Decided

Highacre, Loudwater Heights,
Loudwater WD3 4AX
Two storey front, side extension and rear extensions, loft conversion including increase in ridge height and the provision of two front dormers and rear roof extension and rooflights and construction of a detached garage building.

Ref. No: 20/1567/FUL | Received: Mon 03 Aug 2020 | Validated: Mon 03 Aug 2020 | Status: Decided

Green Leaves, Bridle Lane, Loudwater WD3 4JG
Construction of rear conservatory, enclose front porch, part conversion of double garage into habitable room, alterations to external material, replacement of existing windows and doors including front door

Ref. No: 20/1574/FUL | Received: Mon 03 Aug 2020 | Validated: Fri 14 Aug 2020 | Status: Decided

Silverdene, Sarratt Lane, Loudwater WD3 4AS
Discharge of Condition 4 (Soft Landscaping Scheme), 5 (Energy Statement), 6 (Materials), 7 (Boundary Treatments) pursuant to planning permission 20/0287/FUL

Ref. No: 20/1516/DIS | Received: Tue 28 Jul 2020 | Validated: Fri 21 Aug 2020 | Status: Decided

Polstreath, Bridle Lane, Loudwater, WD3 4JQ

Discharge of Condition 4 (Arb Method Statement) pursuant to application 20/0730/FUL

Ref. No: 20/1752/DIS | Received: Tue 25 Aug 2020 | Validated: Fri 28 Aug 2020 | Status: Decided

Trebarwith, Bridle Lane, Loudwater WD3 4JQ

Discharge of Condition 3 (Materials) pursuant to planning permission 19/2328/FUL

Ref. No: 20/1873/DIS | Received: Thu 10 Sep 2020 | Validated: Thu 10 Sep 2020 | Status: Decided

Wildwood, Loudwater Heights
Loudwater WD3 4AX

Part single storey part two storey rear extension, first floor side extension above existing garage, conversion of loft space to provide habitable space, roof alterations to include the raising of the ridge and insertion of a dormer window to the front elevation and dormer windows to the rear

Ref. No: 20/1829/FUL | Received: Fri 04 Sep 2020 | Validated: Tue 08 Sep 2020 | Status: Decided

Rajah Shanth, Troutstream Way,
Loudwater WD3 4LE

Erection of front gate

Ref. No: 20/1952/FUL | Received: Sat 19 Sep 2020 | Validated: Wed 23 Sep 2020 | Status: Awaiting decision

Stepping Stones, Trout Rise, Loudwater WD3 4JR

Single storey front extension to existing double garage and extension to driveway

Ref. No: 20/1895/FUL | Received: Mon 14 Sep 2020 | Validated: Fri 25 Sep 2020 | Status: Pending Consideration

Stafford House, Loudwater Heights,
Loudwater WD3 4AX

Replacement front door

Ref. No: 20/1850/FUL | Received: Tue 08 Sep 2020 | Validated: Fri 25 Sep 2020 | Status: Awaiting decision

Ingle Lodge, Bridle Lane, Loudwater WD3 4JB

Two storey rear extension and insertion of side dormer window

Ref. No: 20/1732/FUL | Received: Mon 24 Aug 2020 | Validated: Tue 29 Sep 2020 | Status: Decided

hatches, Loudwater Lane, Loudwater WD3 4HY

Two storey front and side extension incorporating a basement, two storey rear extension and roof extension to form habitable accommodation including increase in ridge height and provision of dormers

Ref. No: 20/2083/FUL | Received: Fri 02 Oct 2020 | Validated: Mon 12 Oct 2020 | Status: Pending Consideration

Cool Bananas, Bridle Lane, Loudwater WD3 4JH

Single-storey rear extension and side extension, insertion of roof dormer windows, alterations to fenestrations, insertion of rooflights, alterations to external materials to include render and removal of hung tiles, replacement roof tiles, construction of outbuilding and new patio paving and steps

Ref. No: 20/2209/FUL | Received: Tue 20 Oct 2020 | Validated: Fri 23 Oct 2020 | Status: Pending Consideration

Thorplands, Sarratt Lane, Loudwater WD3 4AD

Replacement of existing windows

Ref. No: 20/2316/FUL | Received: Mon 02 Nov 2020 | Validated: Fri 06 Nov 2020 | Status: Pending Consideration

Wildwood, Loudwater Heights,
Loudwater WD3 4AX

Part single storey, part two storey rear extension, first floor side extension above existing garage, conversion of loft space to provide habitable space, roof alterations to include the raising of the ridge and insertion of a dormer window to the front elevation and dormer windows to the rear

Ref. No: 20/2393/FUL | Received: Tue 10 Nov 2020 | Validated: Tue 10 Nov 2020 | Status: Pending Consideration