



# The Ol' Trout

Loudwater Residents' Association newsletter



## WORDS FROM THE EDITOR

MARCH 2022

### Welcome to the Spring 2022 issue

I'm putting this edition of the Ol' Trout together in the aftermath of Storm Eunice which wreaked havoc around the neighbourhood this week. After championing the Queen's Green Canopy initiative in our last edition, encouraging residents to consider planting a tree for the jubilee, it's been a shame to see a few well-established trees come down as a result of the wild weather. Indeed, Khuram had a close call when a falling tree narrowly missed his hut in Kingfisher Lure (thanks to Vivien Schrager-Powell for the photo above). Thankfully he was ok – I hope you were safe too.

On a cheerier note, in the next few pages we share the latest local event updates; we hear how many folk around our community came together to help find missing dog Gunnar; I have a chat with entrepreneur Lisa Hudson who has opened a cocktail bar in Rickmansworth (I can heartily recommend their 'Breakfast cocktail' though not necessarily at breakfast time!); we take a dip into Loudwater

history with a little help from André Roy, Sandy and Diana Parker and Rickmansworth Historical Society; and we hear the latest from Mission Employable as the cricket pavilion on the common starts to take shape. There are various fun opportunities to get involved with their fundraising over the coming months.

As we emerge from the cold, dark months, we're now focused on planning a number of LRA events, so below are some dates for your diary:

- Friday 15 April - Easter egg hunt
- Saturday 7 and Sunday 8 May – Charity plant sale
- Sunday 5 June – Jubilee afternoon tea
- Friday 8 July - 80s & 90s party
- Friday 23 September – MacMillan coffee morning
- Monday 31 October – Halloween walk

Further details will follow soon. We hope you can join us for some (or all!)

of the fun. I'm expecting our next Ol' Trout to be a 'jubilee special' so we'd especially love to see you at our afternoon tea street party! And just by way of a 'heads up' – we plan to issue the June 2022 edition of the Ol' Trout a week or so later than usual so that we can profile the celebrations while they are still timely (rather than waiting until the September issue). We're excited to see and hear about what you get up to. Feel free to email me photos of your festivities and we'll look to include some next time.

Back in the here and now - I'm pleased to share that the Ol' Trout is this year partnering with Savill's Estate Agents in Rickmansworth. In return for advertising in our pages they largely cover our printing costs. Sue Trybus and Nicky Mason from their team have been lovely to deal with and we're looking forward to including their particularly attractive advertisements.

I hope you enjoy this edition!

**Andrea Marheineke, Editor**  
[editor@lraonline.org.uk](mailto:editor@lraonline.org.uk)





### Latest from the Wine Club

On 9 December the Wine Club held its annual Christmas dinner-dance, for the first time at West Herts Golf Club (our regular venue, Moor Park Golf Club was unavailable). It proved to be a good choice. Entertainment was provided by Neil Duncan as Dean Martin (and friends). Members were treated to a sparkling wine reception followed by a delicious three course Christmas dinner with wines chosen by the Club. After our dinner, the dance floor was well used as Neil sang all our favourite songs. It was lovely to be able to get together again and enjoy ourselves.

The committee will be meeting soon to decide on dates and venues for future events once the warmer weather comes. We're hoping to have a get together towards the end of March.

If you're interested in joining our friendly Club and enjoy a glass (or two) of wine, then contact Carole or Colin Timms 01923 776681 or 07957 132005 (Carole mobile) to find out more.



### LRA Golf Society: Save the date! Monday 30 May

With a more relaxed covid free environment in place we're planning to hold our 18th annual event earlier in the year when hopefully the weather will be better and the evenings longer.

Venue: West Herts Golf Club,  
Rousebarn Lane, Croxley Green  
WD3 3GG

Tee times from 1.30 pm.

The cost: is still to be confirmed but approx. £75 for 18 holes of golf and a buffet or BBQ dinner from 7pm - with a smart casual dress code. Non golfing wives, partners and guests are very welcome to join us in the evening. Non LRA resident guests are also welcome.

We're planning a slightly revised format with the usual individual prizes, but we're also inviting residents to get a team of four players together so that we can have more people playing golf.

I'll be paying a holding deposit shortly so please get back to me by email asap to confirm your intention to attend and enter a team. I look forward to an enjoyable day and your early response would be appreciated.

Percy McCloskey  
[percy@jamesestateagents.com](mailto:percy@jamesestateagents.com)  
07702 603703

### Garden Club: upcoming events

The Garden Club have been a little quiet over the cold winter months, but they have three trips booked for the months ahead as things start to warm up:

11 May: **Leonardslee Gardens** near Horsham (below)

6 July: **Kew Gardens**

21 September: **Aston Pottery and Waterperry Gardens**

They are also hoping to arrange a visit or two to local gardens, details will follow in due course.

If you'd like to join one of these excursions, please contact Margaret Jarrett

[Mum.jarrett@talktalk.net](mailto:Mum.jarrett@talktalk.net)



## Charity plant sale:

7 & 8 May

7 Armitage Close 11am-4pm



By early May your herbaceous plants should be well under way, some may even be in flower. So what better time to check your borders over to see what gaps need filling, what didn't survive the winter or what needs replacing? Even if all seems fine there will surely be a plant or two that is not really earning its keep and should be replaced by something better.

Why not come along to see what I've got on offer at prices far below those of garden centres or nurseries? I always have a good range available but tend to specialise in personal favourites such as astilbes and cannas, for damp places, as well as phlox and hostas. Email me if you'd like a list; I wouldn't be so bold as to call it a catalogue!

Cannas are a particularly good buy as one plant bought this year will give you two, three or more the next as the rhizomes can easily be cut apart at the end of the season, each piece with a growing tip for the following year.

Members are welcome to look around our garden. I'm hoping for a good show of an unusual plant from the Canary Islands, *Echium wildpretii* (see photo, left). It's not the 4m-tall giant echium you see on Treco, in Cornwall and South Devon gardens but a much more elegant and hardier relative, a bi- or even triennial plant that grows to about 2.5m and is rose-pink rather than blue. Bees love it and it sets trillions of seeds before dying. The plant slowly builds a rosette of silvery grey foliage over 18 months or so before shooting up a magnificent flowering climax! As I write my plants appear to be beginning to stir!

All proceeds from the sale are given to the National Garden Scheme charities, a list of which will be on display.

Roger Trigg

[roger@triggmail.org.uk](mailto:roger@triggmail.org.uk)

The LRA are looking to fill a couple of vacant roles on our committee – those of Planning Secretary and Chairman. If you might be interested and would like to find out more, please feel free to get in touch with one of us.

## LRA CONTACTS

**Secretary** - Anni Sweet  
[secretary@lraonline.org.uk](mailto:secretary@lraonline.org.uk)  
Phone: 01923 562387

**Treasurer** - Rohit Desai  
[treasurer@lraonline.org.uk](mailto:treasurer@lraonline.org.uk)  
Phone: 07809 628684

**Membership** - Roger Trigg  
[membership@lraonline.org.uk](mailto:membership@lraonline.org.uk)  
Phone: 01923 774293

**Environment** - John Thompson  
[environment@lraonline.org.uk](mailto:environment@lraonline.org.uk)  
Phone: 01923 772125

**Events** - Zoe Wright-Browne  
[events@lraonline.org.uk](mailto:events@lraonline.org.uk)  
Mobile: 07974 400335

**Ol' Trout** - Andrea Marheineke  
[editor@lraonline.org.uk](mailto:editor@lraonline.org.uk)  
Mobile: 07710 145925

**For LRA enquiries contact**  
[enquiries@lraonline.org.uk](mailto:enquiries@lraonline.org.uk)

**Website** [www.lraonline.org.uk](http://www.lraonline.org.uk)

**Facebook**  
[www.facebook.com/groups/LoudwaterResidents](https://www.facebook.com/groups/LoudwaterResidents)

**Twitter**  
<https://twitter.com/LoudwaterRA>





## Gunner the Ridgeback found safe and well in Loudwater back garden



This is a tail (sorry couldn't help myself) of hope, support and community as a massive local search started for Gunner after he had gone missing from his home on Sarratt Lane, late afternoon on 23 November.

Lauren Morgan's beautiful Ridgeback Gunner was last seen running down Sarratt Road near York House and clipped by a car. He fled the scene and disappeared for over 113 hours, with barely a sighting of him until the call from Ladywood resident, Jay to say he had been spotted on his security camera at 2am on Saturday 27 November.

Lauren's family and friends had covered a lot of ground from Loudwater to Croxley, Sarratt, Belsize, Flauden, Chenies and Chorleywood. Pete Bedwell and York House groundsman, Jason, were out continually on their quad bikes, armed with a thermal imaging camera and GPS following up on reports coming in

from social media of possible sightings. Loudwater residents were also out with their drones covering a vast area in the search for Gunner.

On Saturday 27th the Troutstream Estate WhatsApp group, which had been on dog alert for days, got a 7am message that he had been sighted in Ladywood Close, followed by a few close calls of him in the woods, but no one could get near enough to him to be really sure. John Watkins very kindly opened his back gate into Beechen Grove so that the search team could get further into the woods.

A couple of residents started knocking on doors in Whisperwood, because it made sense that he might be walking in Beechengrove Woods between the gardens. There was a definite sighting of him walking out of the gardens of The Dingles in Whisperwood at about 9am looking skinny and limping towards Trout Rise, sadly he bolted when he was called.

It was the sighting Lauren had been hoping for and the search moved on to the Estate and into Beechengrove Woods, where again he was spotted running after muntjacs by Pete Higgins and Scott Bendall. Lauren knew he was nearby and the decision was made to call off the search and focus on the area around The Dingles with some night time cameras. Lauren settled in for the night with his bed, blankets and food to see if he would revisit the garden again. Gunner was persistent in liking the gardens in Ladywood Close and appeared there again early on Sunday morning. Lauren shot over to the gardens and after a bit of whispering, Gunner came out of his favourite hedge wagging his 'tail' wondering if he was in trouble or not. I'm delighted to say 'not'.

Our lovely community really came up and trumps that weekend: Abbey, Lloyd,

Jay, Pete, Tony, Scott, Zoe, Ann, Phil, Hits, Rupal, Nishan, Erica, Erika, Gail, Emily, John, Louise, Vivien, Storm, and many, many more of you all searching, offering cups of tea, prayers, and sharing the message that Gunner was out there and lost, trying to get home. We're most certainly a community of dog lovers!

Lauren has asked me to thank you all for reaching out and helping to find him. Thankfully the injury from the car was muscle related and he's recovering well.

He now has a GPS collar on and if he strays too far, the alarm goes off! But it seems the fireplace is too warm and the hugs too good to go for a wander again.

Erica Bendall





## Mission EmployAble update

Building work on the new cricket pavilion on the common is progressing well, and fund raising continues so that the vision to establish a training café for young adults with learning disabilities can be realised.

The dinner that Mission EmployAble hosted at Micklefield Hall just before Christmas, featuring live entertainment from local resident Ronan Keating, was a big success. They raised £105k making a significant contribution to their £2.15m target (they have £150k to go).

Their next event is coming up very soon on Saturday 12 March. This time it features music, tea and cake. Their **'Fly me to the moon'** afternoon (3.30-5.15pm) takes place at Christ Church.

The concert will start at 4.15pm where we're told "you'll enjoy toe-tappingly amazing music from Chorleywood Community Choir, along with jazz classics from singer Sarah Stroh and pianist John Butterfield. It will be a celebration of some of the greatest musical tunes, jazz classics plus a medley of American 'freedom' songs including 'Fly me to the moon' and 'California dreaming'".

Tickets are £10 (plus booking fee) each and include tea and a slice of cake.

Following the success of last year's **bluebell walk and woodland pop-up café**, they're coordinating another this spring. The location will be Crosslane Wood, Burtons Lane, Chalfont St Giles.

Once they have a steer from the head gardener on when the bluebells are expected to be out, they will confirm dates but provisionally they are:



Saturday 23rd April, 1pm-4pm  
Sunday 24th April, 10am-1pm  
**or**  
Sunday 1st May, 1pm-4pm  
Monday 2nd May, 10am-1pm

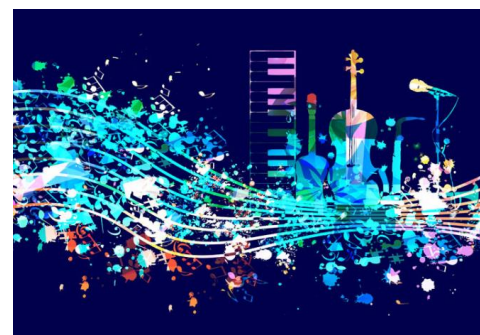
Tickets cost £8 for adults, £5 for over 60's, children under age 10 are free, and family tickets are £20.

Also back for a second year, after last summer's success and a promise that they would do it again, on Friday 22 July (at 8pm) they're hosting another **'Music quiz night under the stars'**. Billed as a light-hearted quiz evening for those aged 16 and over, held in a marquee in beautiful private grounds just outside Chorleywood, it sounds a lot of fun.

Tickets are £14 (plus booking fee)

You can book tickets to all of these fundraising events via the Mission EmployAble website:

[www.missionemployable.co.uk](http://www.missionemployable.co.uk)





## Stepping back in time



Those who attended the LRA AGM late last year will no doubt recall that Sandy and Diana Parker kindly brought along a large aerial photograph of the land between Rooks Hill and Loudwater Lane that dated back to the 1930s. It was a source of great interest on the evening, and we promised to share a copy of it in the Ol' Trout as soon as we were able. So here it is! It highlights how much development has taken place in the intervening years. It's a great window into our local history. Thank you so much Sandy and Diana, for sharing it with us.

On a similar note, André Roy has also been in touch, he shared:

"Anyone interested in Loudwater history should check out the following website to have a look at maps of Loudwater (and the whole of the UK for that matter) through the ages. You can see on some of the older maps, before Loudwater even existed, the

geographical features that give our area some of its names, e.g. Lower Plantation, The Clump, Lady's Wood, Soles Bridge, etc.

The OS 1:1,250/1:2,500, 1944-1970 map even has house names on it, so you can see if your house has changed name over the years... (unless you live in Lower Plantation, which didn't exist then). And all these maps pre-date the M25, so you can see how rural the area once was.

You can also use the transparency slider to overlay a satellite map of today onto the old maps. Paper or electronic copies of the maps can be ordered too.

<https://maps.nls.uk/geo/explore/#zoom=16&lat=51.65398&lon=-0.48867&layers=168&b=1>

Enjoy!"

André (Hessenford, Bridle Lane)

And continuing the theme, Roger Trigg brought along to a recent LRA committee meeting a book published by Rickmansworth Historical Society (written by Adrienne Jacques) that shares a fascinating – and detailed – insight into the history of Loudwater. Here's a small excerpt that explains how Loudwater House came about:

*"In the late 1700's there was a 60-acre property called 'Biggins' between Micklefield and Croxley which was farmed by William Wilson [sic]. By 1802 this property had been inherited, or was purchased, by John Wilson Esq [sic]. Three years later John Wilson Esq also bought Loudwater Farm and soon decided to build an imposing mansion on his Biggins lands which his farm at Loudwater would support. This would be the nucleus of a landed estate and he would purchase other lands to make his estate grander. The idea may have come about because he married advantageously or because he perused old deeds and fancied himself as a lord of a manor, or perhaps a bit of both.*

*The mansion house, to be called 'Beguines', was to be built of the very best materials, with workmanship of the highest quality and with every modern convenience. It would have handsome ornate doors, marble mantelpieces and lots of wood carving. The mansion was to be set in the middle of the original sixty acres, at a considerable distance from the industry of Loudwater Mill and on a gentle slope above the River Chess so that it would never be troubled by flooding. Beechengrove Wood was already in existence and although not owned by John Wilson, it would shelter the mansion from the north-west. A smaller band of woodland would give shelter from the east wind and it was envisaged that more trees would be planted between the two woodlands to give complete cover from the bleak wintry winds.*

*The main rooms of the mansion would face south to south-west and overlook the River Chess which at the time was one of the finest trout streams in the kingdom. Loudwater Farm would supply the mansion with dairy comestibles and the great metropolis of London was accessible within a five-hour journey. Most of the land that was purchased was on the Croxley side of the river but other fields were on the Rickmansworth side. John Wilson built a bridge across the river which joined an existing pathway, now the line of Troutstream Way, which went up the hill to the Chorleywood Road. Here he built a lodge to match the one at the entrance to the house from Croxley. Over the twenty or so years that John Wilson was at Loudwater, his estate grew to 420 acres but sadly – or perhaps inevitably – he overreached himself and by the end of 1819 he was declared a bankrupt.*

*So the desirable and genteel residence was put up for auction on Monday 14 February 1820. The advertisement in The Times newspaper stated that the property was suitable for a family of the first distinction and was situated at an agreeable distance from the turnpike road. There was convenient access to London and other towns by the stage coaches which passed the estate every day. The setting of the house, in a beautiful pastoral vale, was enhanced by the river pleasantly meandering through the grounds and the riparian rights belonged exclusively to the estate."*

Reproduced with kind permission of Rickmansworth Historical Society.

To request a copy of the book this excerpt is taken from, and/or to find out more about their work, visit [www.rickmansworthhistory.org.uk](http://www.rickmansworthhistory.org.uk)

## Hudson Place

### Your social & hospitality hub



As you may have noticed, we're always keen to profile local entrepreneurs that are doing something we think might be of interest to LRA members. So, given my own personal enthusiasm for (consuming!) cocktails, I was delighted to get to have a chat with Lisa Hudson, owner of the relatively new 'Hudson Place' cocktail bar at 9 Church Street, Ricki to hear more about her business, the range of services she offers – some that that extend beyond their own four walls - and what brought her to our corner of the world.

So first things first, given all the choices she has available to her each day, I was keen to know what Lisa's cocktail of choice is – she shared that a raspberry margarita is in fact her favourite. Sounds delicious! Having made a mental note to try one on my next visit, I got her to tell me a bit about herself. Lisa grew up in Croxley, though her professional life her took her to the Middle East for many years working in the automotive sector. There she was exposed to some incredible hospitality which inspired her to have a change of career direction a few years ago.

With Cinnamon Square downsizing their business, it provided an opportunity to do something new with the half of the property they no longer required. So in 2019 Lisa took on the space, invested in a major renovation of it and in December Hudson Place was ready to open its doors – just in time for Covid!

The last couple of years have obviously been challenging for the hospitality industry but Lisa was not to be beaten. As well as bringing to life her vision for a venue that is more than just a bar – offering everything from cocktails, to fabulous wines and mezze graze platters, for drop-ins, bookings and private hire – she also broadened the proposition. Consequently, they now also offer take away cocktails and mezze boxes; 'bottomless prosecco' brunch packages; afternoon teas; and will even supply a mobile cocktail bar (with chef if desired) to come to your own party or event. Her team will be taking their mobile cocktail bar to the Rickmansworth Canal Festival at the Aquadrome on 21 & 22 May, if you fancy seeing them in action.

It's clear from our conversation that Lisa is very passionate about creating an environment that is relaxing, friendly and focused on creating good times fueled by great food and drink. With happy hours from 5-7pm, and open late, sometimes with an in-house DJ – it's brilliant to have somewhere local to enjoy after work, or on a Saturday....or Sunday for that matter. To find out more check out their website (or just pop in!).

[www.hudsonplace.co.uk](http://www.hudsonplace.co.uk)





## Planning update

### **Coppers, Sarratt Lane, Loudwater WD3 4AD**

#### [Single storey rear extensions](#)

Ref. No: 21/2492/FUL | Received: Wed 27 Oct 2021 | Validated: Mon 01 Nov 2021 | Status: Decided

### **Greenacre, Troutstream Way, Loudwater WD3 4JN**

#### [Removal of timber balconies and steps, front and rear dormer to side extension roof, replacement doors and windows, roof alterations and painting of external walls](#)

Ref. No: 21/2661/FUL | Received: Thu 18 Nov 2021 | Validated: Mon 22 Nov 2021 | Status: Decided

### **Lightwoods, Troutstream Way, Loudwater WD3 4LQ**

#### [Non-Material Amendment to planning permission 21/1910/FUL: Increase in depth of part single, part two storey side and rear extensions](#)

Ref. No: 21/2755/NMA | Received: Wed 01 Dec 2021 | Validated: Wed 08 Dec 2021 | Status: Decided

### **Lightwoods, Troutstream Way, Loudwater WD3 4LQ**

#### [Certificate of Lawfulness Proposed Development: Construction of two detached outbuildings with associated hardstanding](#)

Ref. No: 21/2754/CLPD | Received: Wed 01 Dec 2021 | Validated: Wed 29 Dec 2021 | Status: Pending Consideration

### **6 Lower Plantation, Loudwater, WD3 4PQ**

#### [Single storey front and side extension](#)

Ref. No: 21/2886/FUL | Received: Tue 21 Dec 2021 | Validated: Tue 21 Dec 2021 | Status: Pending Consideration

### **Stamhus, Troutstream Way, Loudwater WD3 4LB**

#### [Erection of detached garage](#)

Ref. No: 21/2849/FUL | Received: Wed 15 Dec 2021 | Validated: Wed 15 Dec 2021 | Status: Awaiting decision

### **Tall Timbers, Rooks Hill, Loudwater WD3 4HZ**

#### [Alterations to main entrance, fenestration and external materials and insertion of rooflights](#)

Ref. No: 21/2573/FUL | Received: Fri 05 Nov 2021 | Validated: Mon 15 Nov 2021 | Status: Decided

### **Tanglewood, Sarratt Lane, Loudwater WD3 4AS**

#### [Two-storey front and side extensions, construction of front, side and rear dormer windows, construction of rear bay windows with balconies above, alterations to fenestration and internal alterations](#)

Ref. No: 21/2929/FUL | Received: Wed 29 Dec 2021 | Validated: Fri 14 Jan 2022 | Status: Pending Consideration

### **Trout Rise Farm, Troutstream Way, Loudwater WD3 4LB**

#### [Demolition of an existing storage unit and construction of single storey](#)

#### [dwelling house and change of use of the existing residential unit into a barn](#)

Ref. No: 21/2499/FUL | Received: Wed 27 Oct 2021 | Validated: Mon 13 Dec 2021 | Status: Pending Consideration

### **Wildwood, Loudwater Heights, Loudwater WD3 4AX**

#### [Variation of condition 2 \(approved plans\) pursuant to planning permission 21/0829/FUL \(Part single storey part two storey rear extension, first floor side extension and loft conversion including roof alterations, rear dormers and increase in ridge height\) to include alterations to fenestration detail.](#)

Ref. No: 21/2519/FUL | Received: Sat 30 Oct 2021 | Validated: Tue 23 Nov 2021 | Status: Decided

<https://www3.threerivers.gov.uk/online-applications/>

### **A request from our Membership Secretary...**

Do you have new neighbours? If so, please let us know as we'd love to invite them to join the residents' association. Unfortunately, there's no easy way for us to keep tabs on all the comings and goings in Loudwater but it is easy to arrange for new residents to join, should they wish to, once we know about them.

By the same token, if your neighbours have left the district or someone has sadly passed away, we'd be very grateful if you would kindly advise us so that we can update our records.

Thank you for your help.  
Roger Trigg